

*Maypole Marquee Ltd*



*Explore our Stunning Event Spaces*



# *Maypole Marquee Ltd*



Established in 1992, with a wealth of industry knowledge we know how to make your event truly **MEMORABLE**.

We can help from inception through to realisation of your dream day!

## *Why Choose Us*



# Maypole Marquee Ltd



## KEY FEATURES

- Pleated Ivory Linings
- Norwegian Spruce Internal King Poles
- External Natural Rope & Wooden Walling Pegs
- Panoramic Windows
- Option to open up all Window Sections

THESE STRUCTURES CAN ONLY BE ERECTED ON GRASS

## Traditional Marquees



# Maypole Marquee Ltd



## KEY FEATURES

- Flat Ivory Linings
- Norwegian Spruce Internal King Poles
- External Petals to Natural Rope & Wooden Walling Pegs
- Panoramic Windows
- Option to open up all Window Sections

THESE STRUCTURES CAN ONLY BE ERECTED ON GRASS

Petal Marquees



# Maypole Marquee Ltd



## KEY FEATURES

- Unique Circular Shaped Ends
- Norwegian Spruce Internal King Poles
- Natural Rope & Wooden Walling Pegs
- 8ft High Panoramic Windows as Standard
- Option to open up all Window Sections



Sailcloth Marquees

THESE STRUCTURES CAN ONLY BE ERECTED ON GRASS



# Maypole Marquee Ltd



## KEY FEATURES

- Pleated Ivory Linings
- Clear Internal Space with no Poles
- Window Sections with some sections able to open
- Option of Black Starcloth Lining

THESE STRUCTURES CAN BE ERECTED ON GRASS OR HARDSTAND

## Aluminium Structures



# Maypole Marquee Ltd



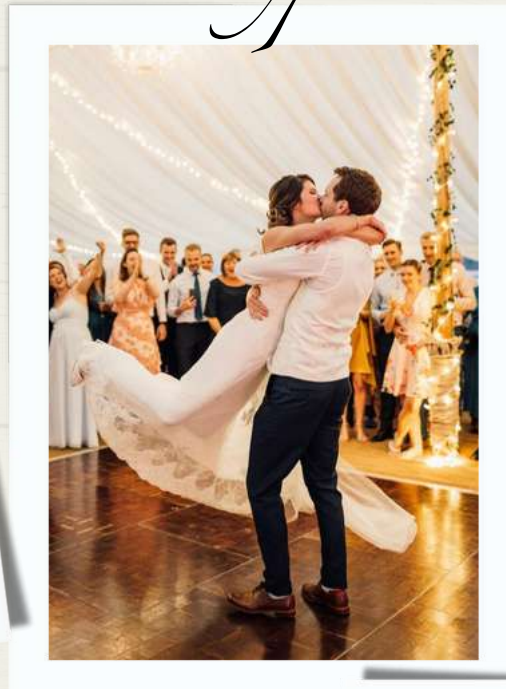
Our stock of furniture is extensive (and certainly not ALL listed below)....and if we don't have it we know a reputable contractor that does!

- Tables - Round, Trestle & Rustic Trestles
- Chairs - Limewash Chiavari, Antique Crossback, Peacock Chairs
- Vintage Wooden Bars - Applecrate, Circular or Semi- Circular
- Dance Floors - Parquet or Black & White
- Luxury Toilet Trailers
- SuperSilent Event Generators
- Chiller Trailers

## Ancillary Equipment



# Maypole Marquee Ltd



Lighting can really enhance your event and can be as personalised as you like..

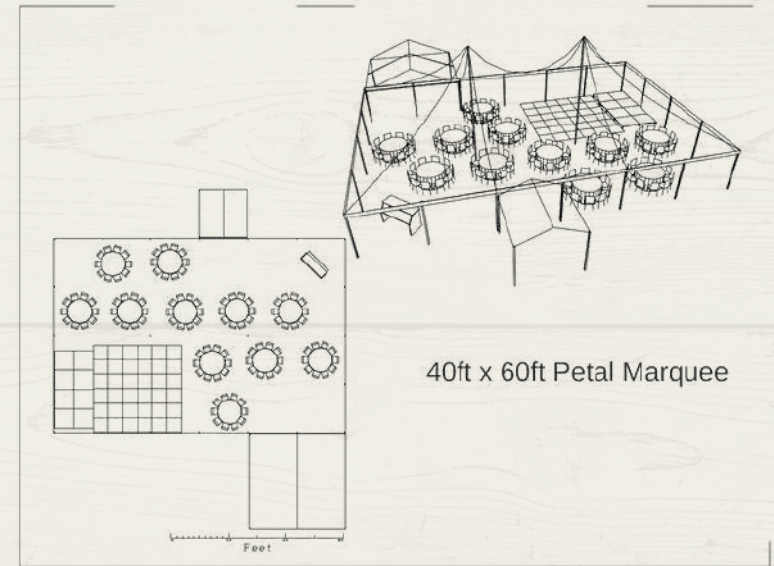
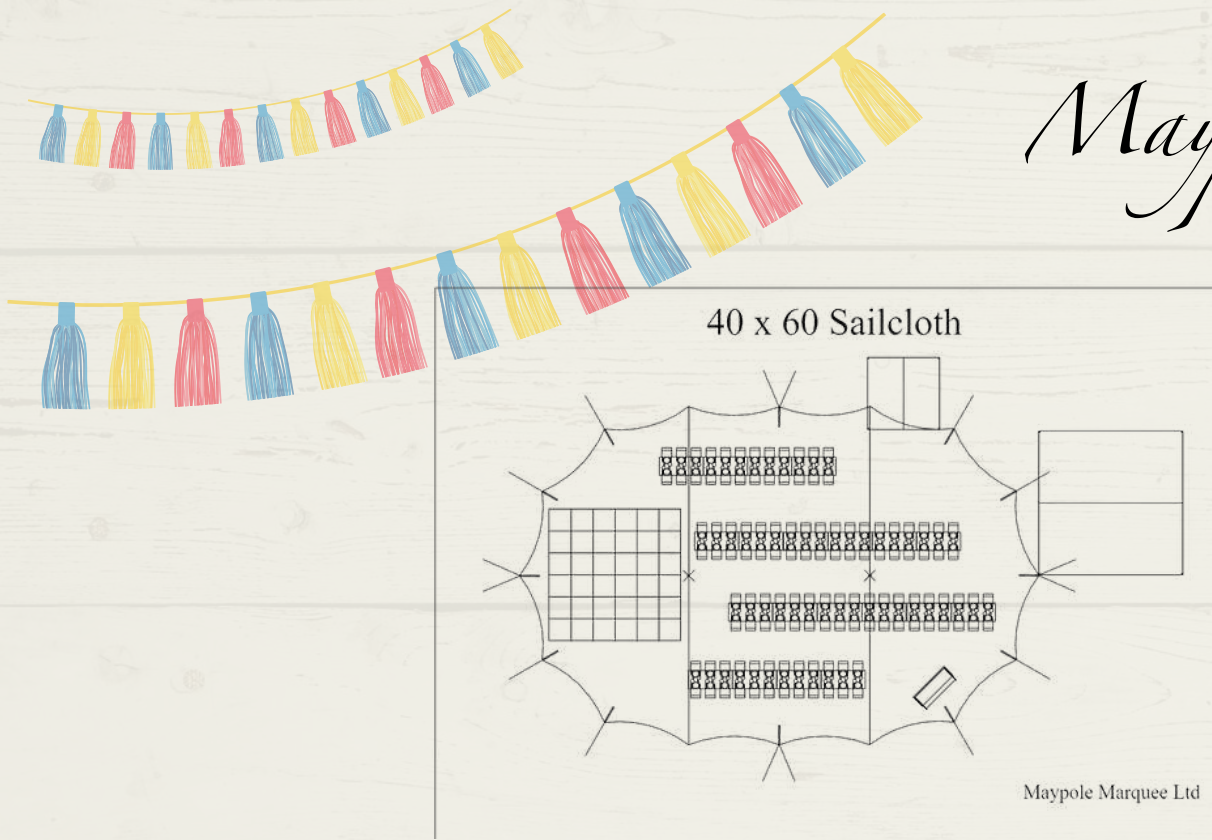
- Chandelier Lighting
- Uplighters (Clear or Coloured)
- Fairy Lights to Ceiling Section
- Fairy Lights to Internal Poles
- Festoon Lights to Ceiling Section
- Festoon Lights 'Up and Over' Externally
- OR....a combination of any/all of the above



## Lighting Options



# Maypole Marquee Ltd



We understand how daunting it is not actually being able to physically visualise your marquee space....we can produce a CAD Plan to show you exactly what can (or can't!) be achieved in your own personal event space! This is purely a guide as to how you may wish to set up your own tables/chairs before your event.

*CAD Plans*





# *Maypole Marquee Ltd*

Booking a marquee isn't an everyday thing for the majority of our customers and we are frequently asked how best to proceed so we have drawn up a little tick list of what generally is the best way forward.

- Decide upon which structure(s) you would like...
- Supply us with as much info as possible - location, date, party size (daytime & evening), site access, special requirements etc
- We will draw up an initial quotation including everything we can supply for your event
- Once you are happy with the quote we usually arrange a **no-obligation** site meet to check we can fulfil all duties - we can also arrange a mutually agreeable visit to one of our Marquees in situ for you to visualise things.
- We proceed to invoice for a **Non-Refundable** 30% Deposit for all agreed equipment with the 70% Balance payable 2 weeks prior to erection.



## *Booking Process*